



August/September 2022

PRINCIPAL:
Kim Monette

ASSISTANT PRINCIPAL:
Megan Havelak



WELCOME

We are so excited to welcome you to a new school year and the BULLDOG Family!

Middle School is a time of big changes both physically and emotionally for your child. Students experience an array of emotions when beginning a new school or school year. It is very important during this transitional time to keep the lines of communication open with your child's teachers, counselor and/or administrator. Being aware of your child's academics is one of the biggest challenges for our middle level students and parents to navigate with multiple teachers in their schedule. Familiarizing yourselves with Schoology and ParentVUE for information on assignments, homework and attendance will be a key component to your child's success in middle school. In addition, creating a system for your child to stay organized will keep them from feeling overwhelmed in navigating this change.

Emotional and Social well-being is just as important as academics for your child; Brooklyn Middle STEAM School has many helpful and caring staff members to assist in navigating these transitional adolescent years. Each grade level has an SMS (Student Management Specialist) and Counselor that will follow your child throughout their time at BMS along with their teachers. We also have Social Workers and outside community mental health resources that are available in building. Please reach out to your child's counselor for more information. Each of these staff members are excited to be part of your child's life and yours.

Staying involved in your child's learning throughout the school year is key. The **BEST** place to obtain the information about everything that is going on at BMS is our school website and our online newsletters. You will find information about after school programs, STEAM integrated activities, schoolwide events and much more on our school website as well as our newsletters!! Be sure to check these resources for the most updated information available. Please note the August/September Newsletter is the only newsletter we print and mail. All other newsletters throughout the school year will be posted on our website as well as sent to you by email.

It is so important for our students to get involved in school and it is just as important for you to stay involved as your child enters middle school. I encourage you to consider becoming a part of our **Parents and Community Together (PACT) parent organization**. PACT representatives will be available at our Learning Conferences to answer any questions that you may have about getting involved in this great organization. Please watch for upcoming meeting dates. We hope you will become involved in this important organization.

You should have received a **Student Calendar/ Handbook** in the mail; please review this important mailing with your student(s). The handbook/calendar is filled with important information and dates as you begin the new school year and is a great reference for you throughout the year.

I look forward to welcoming you and your child(ren) to Brooklyn Middle STEAM School. **Please join us on Wednesday, August 31st for our Learning Conference (open house format) from 4:00 to 7:00 PM at Brooklyn Middle STEAM School.**

See you soon!
Kim Monette, Principal

We inspire and prepare all students to achieve their dreams; contribute to community; and engage in a lifetime of learning. Our scholars benefit from opportunities, support and partnerships that help them graduate with the confidence, courage and competence to make their dreams a reality.

DATES TO REMEMBER

Wednesday, August 31

Learning Conferences
4:00 — 7 :00 PM

Tuesday, September 6

First Day of School
For ALL students

Tuesday, September 13

Picture Day

Wednesday, October 12

Picture Re-take Day

**Thursday/Friday,
October 20/21**

Conference Release days
NO SCHOOL

Tuesday, November 1

Parent/Teacher Conferences
Teacher Classrooms
3:00—7:15 PM

Thursday, November 3

Virtual Parent/Teacher
Conferences 3:15-7:30 PM



ATTENDANCE & PARENT PICK UP/DROP OFF

ATTENDANCE

With the new school year approaching we wanted to share some important information about attendance procedures of Brooklyn Middle STEAM school. In order for your child to receive the best educational opportunity possible, it is important for them to be engaged in school work every day, whether in-person or distance.

It's the law!

Children between the ages of 7 and 17 must attend school every day and be on time unless they have a lawful reason for being absent.

Lawful Reasons Include:

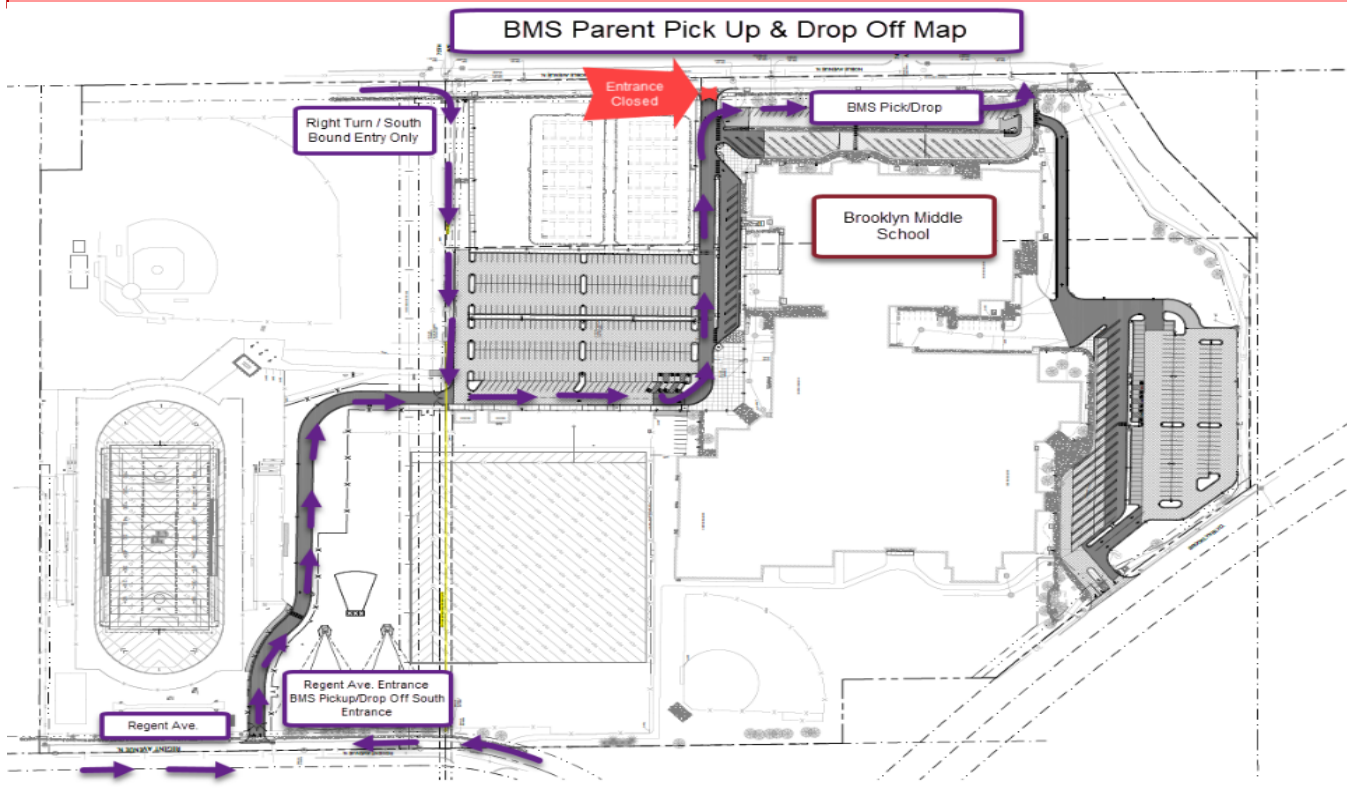
1. **Religious holidays**
2. **Illness:** A parent or guardian must verify the student's illness. School personnel may require the family to provide medical verification or to see the school nurse. Medical appointments that cannot be scheduled outside school hours may also be lawfully excused.
3. **Family emergency:** Examples are house fire or critical injury to parent/guardian.
4. **Funeral of a family member**

Minnesota Statute 120A.22, subd. 1 and subd. 5(a) and Minnesota Statute 120A.35.

Did You Know?

- When a student is **tardy seven times** to classes, their tardiness is counted as one full unexcused day of absence
- When a student receives **six or more unexcused absences** the school must file a Parent Group Meeting (PGM) through Be@School.
- Parents will be contacted by the county attorney's office directing them to attend a Parent Group Meeting (PGM) and schools or family may request agency services
- When a student reaches **nine unexcused absences** the school must file a 2nd report through Be@School which is the Schools Team Attendance Review (STAR)
- STAR meeting requires extended screening of the report within the Be@School program. Educational Neglect reports are reviewed for possible Child Protection (CP) involvement. Students are assigned to community agency for voluntary services unless already receiving other Hennepin County Services.

Our goal is to create the best opportunity for your student's future. We can only have the opportunity if your child is in school! For questions, please contact Megan Havelak, Assistant Principal at 763-569-7700.



STUDENT OPPORTUNITIES & PARENT INVOLVEMENT

HIGH SCHOOL SPORTS

The following sports are available for students to participate in at the high school level. Starting dates are in August. Check with your high school.

Fall (Aug-Oct)

Cross Country (7-12)
Girls Tennis (7-12)
Girls Swimming (7-12)
Soccer (7-12)
Girls Volleyball (7-12)
Football (8-12)

Winter (Nov-Mar)

Alpine Skiing (7-12)
Hockey (7-12)
Basketball (7-12)
Nordic Skiing (7-12)
Boys Swimming (7-12)
Wrestling (7-12)
Girls Gymnastics (7-12)

Spring (Mar-June)

Baseball (7-12)
Golf (7-12)
Boys Tennis (7-12)
Lacrosse (7-12)
Synchronized Swimming (7-12)
Boys Volleyball (7-12)
Girls Softball (Fast Pitch 7-12)
Track (7-12)

ADAPTIVE EXTRACURRICULAR SPORTS

For information on adaptive sports, please call 763-315-7600.



OPPORTUNITIES FOR PARENT/GUARDIAN INVOLVEMENT AT BMS

Parents/guardians of BMS students have many opportunities to learn about, and to participate in, school life. Parents/guardians are welcome to participate in school activities and are encouraged to take advantage of opportunities to learn about the school community.

To Gain Information:

- Read the Parent/Student Handbook and school newsletters
- Access the BMS website which provides information about school activities and provides links to teacher e-mail addresses at <http://schools.district279.org/bms/>
- Call or e-mail staff members with questions
- Attend conferences each trimester
- Attend concerts, athletic events, and other student performances and school activities

VOLUNTEER PROGRAM

The mission of volunteer involvement in ISD 279 is to build community, support student success and inspire people to excel by encouraging parent, student, and community involvement through meaningful volunteer work in our schools.

We want to THANK our parents, grandparents, and members of the community for your continued support! Volunteers are an important asset to our community. Volunteers continue to support the educational process through the contribution of their time and talents. Contribute your time and talents through: Tutoring, School Events, Classroom Assistance, Field Trips, Media Center support, and more!

Schools recognize and support families and community members as participants in school programs by encouraging their roles in supporting, learning and honoring them as essential volunteers. We appreciate the support! Please watch for communications for volunteer opportunities.

IS YOUR CHILD DUE FOR A PHYSICAL EXAM?

It is recommended that children ages 6-18 have a complete physical exam at least once every other year. If it has been more than two years since your child's last exam, you may want to call your clinic soon to make an appointment.

Students registering for High School sports will need a sports physical every two years.



BEFORE AND AFTER SCHOOL PROGRAMS FOR STUDENTS AT BMS

At BMS, students can participate in many enrichment activities that will be planned for before and after school! What will you sign up for? Listen to the daily announcements for up-to-date information. Parent/guardian permission is needed for all activities, but they are FREE! (Some classes may require a small materials fee.)

BUILDING ACCESS & PARENT & FAMILY TOOL KIT

BUILDING ACCESS & SECURITY

For the safety of our students and staff, proof of identification will be required. Visitors will be buzzed in and ID will be checked in at the main office before obtaining a visitor's badge. Children will only be released to their parents or individuals authorized on the student's emergency card/screen. In addition, all exterior doors will remain locked during the school day, except for the main entrance.



PARENT & FAMILY TOOL KIT

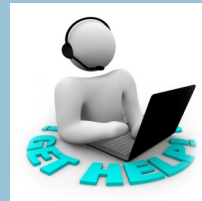
The new Parent & Family Toolkit has been created for PreK-12 parents and families and contains core technology tools and curriculum resources to support learning at home.

Families will find information about particular tools as well as tutorials and other guidance to help use them to their fullest capacity such as:

- CPM Math Curriculum Update
- Technology Quick Links for Schoology and Synergy support
- Grading Support
- Curriculum Links
- Supporting Learning At Home Assistance

The Parent & Family Toolkit can be located at:

<https://sites.google.com/apps.district279.org/student-family-resources/home?>



September 2022

Sunday	Monday	Tuesday	Wednesday	Thursday	Friday	Saturday
				1	2	3
			Licensed Staff Workshop	Licensed Staff Workshop		
4	5	6 Day 1 WELCOME BACK! First day of school for students	7 Day 2	8 Day 1	9 Day 2	10
	Labor Day No School					
11	12 Day 1	13 Day 2 PICTURE DAY	14 Day 1	15 Day 2	16 Day 1	17
18	19 Day 2	20 Day 1	21 Day 2	22 Day 1	23 Day 2	24
25	26 Day 1	27 Day 2	28 Day 1	29 Day 2	30 Day 1	

BROOKLYN MIDDLE STEAM SCHOOL

STEAM - Science, Technology, Engineering, Arts and Math Engineering a Global Perspective

Parent/Student Handbook/Calendar



2022-2023

7377 Noble Avenue North • Brooklyn Park, Minnesota 55443
General Information Phone: (763) 569-7700
Attendance Line: (763) 569-7616

Refer to our
Parent
Handbook/
Calendar on our
school website
for a full school
year calendar.

ELECTRONIC DEVICE POLICY

CHROMEBOOKS



Chromebooks provided to students are DISTRICT OWNED DEVICES and are for EDUCATIONAL PURPOSES ONLY. Students are expected to bring their district issued device to school and back home every day to utilize in coop-

eration with their teachers to enhance their educational experience. It is the responsibility of each teacher to establish procedures and expectations for use of the digital learning devices in their classroom, and it is the responsibility of each student to follow those procedures and expectations. Students are advised to secure their digital learning and electronic devices at all times as we are not able to provide staff time to investigate lost or stolen items.

Reminders:

- Bring Chromebook each day to and from school
- Chromebook should be fully charged at the start of each day
- Only authorized Apps should be downloaded onto the device
- Social Media sites are not allowed to be accessed using ISD 279 devices and networks

Any photographic or movie image taken by students or adults on ISD 279 property without the consent of the individual(s) will result in disciplinary action. Any photographic or movie image taken of students or staff members on ISD 279 property cannot be published or posted on a personal public forum (Twitter, Facebook, YouTube, Instagram, SnapChat, etc.) without the written consent of each individual. Any violation will result in disciplinary action.



CELL PHONES AND OTHER ELECTRONIC DEVICES

Students are expected to conduct themselves in a manner that respects the rights of others. Use of a personal electronic device in a manner that interfered with a positive, orderly, educational environment or does not respect the rights of others is prohibited. In our learning environment it is important that students stay focused on their learning; therefore, all personal electronic devices need to be turned off and put away when school starts at 8:10 a.m. until 2:40 p.m. Any cell phone or electronic item used or heard by staff members will be confiscated, bagged, tagged, and sent to the administrative office.

- **First offense:** The item will be held until the end of the school day. Students may pick up their electronic device from the office at 2:40 p.m. Students need to sign for the return of the device.
- **Second offense:** The item will be unavailable (kept in the office, kept at home (per parent request), or check-in/check-out) to the student during the school day for 3 days including the day it was taken. Confiscated item will be returned to student.
- **Third offense:** The item will be unavailable (kept in the office, kept at home (per parent request), or check-in/check-out) to the student during the school day for 5 days and additional consequences may be assigned. Parents will be contacted by administration and the item may need to pick up the confiscated item from the administrative office.



A parent/guardian/other adult may pick up the confiscated item with a required meeting and an expectation that the device stays at home or with an agreed arrangement with administration. Students will have access to school phones to contact parents/guardians during the school day in case of an emergency.

Student personal electronic devices are subject to search upon reasonable suspicion that the device has been used in a manner that violates the law or District Policy 505.

FOOD INFORMATION

Help your school by applying for meal benefits by Sept. 30

MEALS ARE NO LONGER FREE. Area School students, district families are encouraged to complete the free or reduced lunch application by Sept. 30 to see if they qualify for other benefits, such as reduced activity fees, instrument purchases, and lower internet costs. Applications may be completed at any time during the school year but applying by Sept. 30 can help schools qualify for additional funding.

Families who complete the application for meal benefits can also help their schools qualify for educational funding and discounts—ensuring more opportunities, support and partnerships to help scholars thrive. Applications are required every year, so even if you've applied in the past, it's important to apply again by Sept. 30.

Completing the form is quick and easy! Although SmartSchoolK12 is the preferred method, [you can still access](#)

[and complete the form online](#) even without an account.

[Apply online via SmartSchoolK12.](#)

1. If you already have a SmartSchoolK12 account, simply log in and complete the form. If you do not have an account, follow the prompts and use your child's birthday and student ID number to sign up. If you need the student ID number, please contact Julie Moberg at 763-391-7129 for assistance.
2. After creating an account, check your email for a message from SmartSchoolK12 and click the link provided to activate your account.
3. Sign in to SmartSchoolK12, click on the orange fork and knife icon, and access the Application for Educational Benefits form.



SCHOOL MILK INFORMATION

Children who have been approved for FREE/REDUCED meals and choose to bring a meal from home (rather than eating the breakfast/lunch made at the school) are **not** eligible for "Free" milk on that day.

The school breakfast/lunch programs are required to serve milk as one of the components of the basic food groups. Lowfat, fat-free and flavored fat-free milks will be offered.

For those students who are lactose intolerant, lactose reduced milk will be supplied upon the written request of a parent or guardian. Lactose intolerance is not to be confused with food allergies. Students who have an allergic reaction to milk are required by USDA to provide a signed medical statement if they would like a substitute.

2022-23 SCHOOL MEAL PRICES

BREAKFAST: \$1.60
LUNCH: \$2.70

Ala carte items will be offered for sale at an additional cost.



DON'T FORGET!

Students are to bring their Student ID each and every day

ID's are required to be scanned for:

- 1) Breakfast, lunch and ala carte items.
- 2) Checking out items from the media center.





SAFETY MATTERS



SCHOOL SAFETY

The safety and security of students and staff members at BMS is a high priority. Since our students are young adolescents, we take extra measures to monitor their whereabouts and to ensure their security. Parents or guardians are asked to help by being aware of and supporting school procedures.

The staff at BMS pride themselves in maintaining a safe, clean, healthy learning environment for students. It's important to know that we take proactive measures to ensure a safe school. Rules against weapons and fighting are outlined in the student handbook/calendar. Each trimester the Code of Conduct is reviewed in classes to further emphasize expectations regarding behavior, weapons, and fighting. Our school resource officer works with students to solve problems, as do administrators and counselors. Most importantly, teachers provide direction in peaceful conflict resolution. We work hard to provide a calm and safe learning environment and insist that students seek adult assistance in resolving conflicts if necessary.

Students who disrupt the order of the

school by carrying weapons or engaging in fighting will receive severe consequences. Weapons violations will result in suspension and a recommendation to the District for expulsion. Physical fighting and assaults will also result in suspension, with a possible recommendation for expulsion. It is important to be aware that **any physical assault may result in recommendation for expulsion and criminal charges.** You can help by making sure that your student clearly understands that neither you, nor our staff and administration will tolerate fighting or weapons at Brooklyn Middle School. These disruptions cause fear, and when children are fearful at school, they cannot learn. We take a hard line on this issue—our children are worth it!

Student Supervision

Attendance in classes is carefully monitored. **It is important that parents notify the school if their students will be absent.** Once classes begin, student movement throughout the building is regulated by a pass system, and students must be under the supervision of a staff member at all times. After school, students must be supervised by a teacher, or they have to

leave the building.

Anytime a child is leaving school. A parent (who is listed on the emergency screen) must come in and sign the child out. A photo ID will be requested in order to remove a child from school. The student must sign back in when returning to school.

Closed Campus

The middle school is a closed campus. Outside food from parents or vendors is not allowed and will be sent back home with the parent. Guardians and students cannot have food delivered to the school. If this occurs, the food will remain in the main office until the end of the day. **Under no circumstances may any student leave school property after arriving without parent/guardian permission and office sign out.** Any student leaving campus without authorization who returns to the building may be searched.

Any student observing a dangerous, harmful, threatening, suspicious, or frightening situation should report it to an adult immediately. We are all responsible for a safe and orderly school.



BROOKLYN MIDDLE

Science, Technology, Engineering, Arts & Math

HOME ABOUT US ACADEMICS STUDENTS FAMILIES STAFF ISD 279

Check out one or more of these great resources about Bullying Prevention:

stopbullying.gov

Bullying.us



Bully Police USA



NATIONAL
CRIME
PREVENTION
COUNCIL

Bullying at School and Online

Check out our school website at <http://schools.district279.org/bms/> for information about Bullying Prevention under the Families tab for Community Resources, Crisis, Additional Resources.



HEALTH INFORMATION

IMMUNIZATION REQUIREMENTS

State law requires that students are appropriately immunized or show evidence of conscientious objector (CO) status or medical exemption status.

Prior to starting school in the fall students entering 7th grade **must** have received the following immunizations:

- **Tdap**—tetanus booster shot that contains pertussis
- **Meningococcal** shot to protect against meningitis



No student will be allowed to start school in September without documentation signed by the physician or parent/guardian giving the month/day/year of the vaccinations.

This documentation must be received by the school health office prior to the first day of school in order for your child to attend school and be given a class schedule.

Note: Any immunization can be waived for medical reasons or for families who are conscientiously opposed to the immunization. Please contact the Enrollment Center to obtain

TOO SICK FOR SCHOOL?

Your child is required to stay home if they:

- Tested Positive for COVID-19
- If they have any of the following symptoms:
 - ⇒ Fever or Feeling Feverish
 - ⇒ Chills
 - ⇒ A New Cough
 - ⇒ Shortness of Breath
 - ⇒ A New Sore Throat
 - ⇒ New Muscle Aches
 - ⇒ New Headache
 - ⇒ New Loss of Smell or Taste

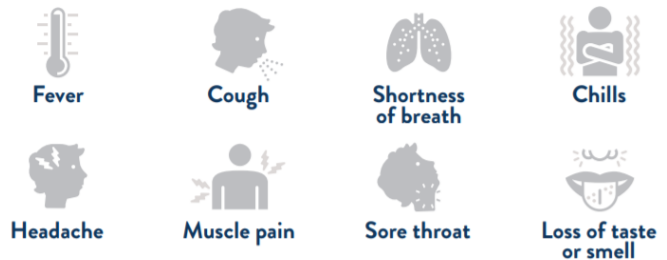


Please do not send an ill child to school. They will not be able to learn well, they could cause other students/adults to become ill, and you will more than likely be contacted to come and take them home from school. Please make sure your contact information is up to date.

Your child may return to school under these guidelines:

- Your symptoms are better, **AND**;
- It has been 10 days since you first felt sick, **AND**;
- You have had no fever for the last three days without using medicine that lowers the fever.
- No vomiting or diarrhea for 24 hours after the last episode
- No question of contagious illness or rash

WATCH FOR SYMPTOMS



MEDICATIONS IN SCHOOL

Students are not allowed to carry any medications (non-prescription included) in school. The only exception to this practice would be for students with asthma whose parent provides a written order to carry an inhaler with them. The School nurse keeps all medications in their office and administers them when they have the required written

doctor order and parent permission forms. You may obtain these forms from the school health office or the BMS website. For daily medications, it is helpful if the medications and the doctor order can be brought to school prior to the first day of school.



PHYSICAL EDUCATION LIMITATIONS

A physician's statement is required if your child is unable to fully participate in any physical education activity for more than three days. The statement must include the reason for the restriction, length of time, and the physician's signature.

SICK AT SCHOOL

If your child becomes ill at school, students are expected to visit the school nurse where a determination will be made to call home if needed. **Please do not come to school to pick them up unless contacted by the school nurse.** Student cell phones are not permitted in school, so students should NOT be calling parents to pick them up. Please review this expectation with your child.

FYI: FOR YOUR INFORMATION

DRESS CODE EXPECTATIONS

CLOTHING

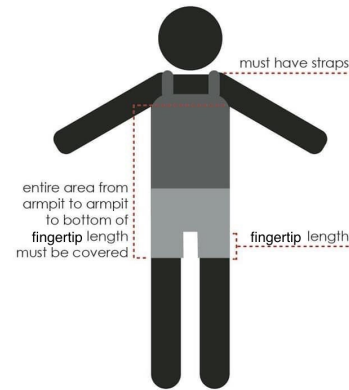
Students are expected to dress appropriately for the school day. Shoes and shirts/tops must be worn at all times in the building for health and safety reasons. Clothing should be appropriate and should not interfere with the rights of other persons to have a safe and supportive school environment.

Examples that are inappropriate include but are not limited to:

- Clothing that damages or potentially damages school property (e.g. cleats or spikes on shoes/clothing)
- Clothing advertising substances illegal for children and adolescents
- Clothing containing obscene and/or profane language, slogans, emblems or pictures
- Clothing containing language, slogans, emblems or pictures that promote or depict violence, hate, discrimination, harassment toward other students or staff
- Clothing that reveals or does not adequately cover intimate body parts of the student

- Clothing that substantially and materially interferes with the school environment/educational process or otherwise violates school district policy

Our school community supports and will enforce School Board Policy #504: Student Dress and Appearance.



Parents, we ask that you please support our goal of maintaining school appropriate dress. **PLEASE DO CLOTHING CHECKS AT HOME PRIOR TO COMING TO SCHOOL.** Students in violation of the dress code policy will be expected to change. If students do not have clothes to change into they will be expected to change into donated clothing provided by BMS.

NOTICE OF USE OF STUDENT PHOTOS

BMS reserves the right to use your student's name, photographic likeness or video or audio image in all forms and media for communications, public relations, advertising, trade and any other lawful purposes. Please notify school administration if you **do not** want your student's image used for these purposes.

EMERGENCY CHILDCARE

It is imperative that in the case of an emergency evacuation of the school building, **all students are able to get into their homes**, or that they have an alternative destination. If your child relies on city transportation or on a ride from a parent/guardian, please establish an alternative shelter or transportation plan with friends or neighbors. If the school building is evacuated, **students will not be allowed to stay in the building to make phone calls.**

APPOINTMENTS

A parent/guardian should send a note excusing their student from school for appointments. The student brings the note to the office before school to get a blue pass allowing a student to leave class at a designated time. A parent/guardian must come into the office and sign out the student at the time of leaving. The student must sign back in when returning to school. **In order to pick up a student, parent/guardian must present a valid ID to the front office.**



**TUESDAY,
SEPTEMBER 13TH**

Any student observing a dangerous, harmful, threatening, suspicious, or frightening situation should report it to an adult immediately.



2022-23 BACK TO SCHOOL FORMS COMPLETED ONLINE

All back-to-school forms will be filled out online this year. Forms that are a part of this process include emergency cards, family contact information updates and photo/military denial releases. Complete the necessary steps today by going to the ParentVUE system, which is accessible from the Family Access button on the top right of any district or school website. On-screen prompts will then walk you through the back-to-school forms process. **Step-by-step instructions are available at district279.org/forms.**

A username and password are required to use ParentVUE. Depending on whether or not you've used ParentVUE in the past, one of three steps will need to be taken to gain access to the system:

- Log into ParentVUE using the username and password already established. This is for parents/caregivers that are familiar with ParentVUE and have used the system for other purposes.
- Create a username and password via the security-protected Aug. 3 email invite from ParentVUE. This is for parents/caregivers that have not used ParentVUE to date. Parents/caregivers that do not see an email invite are asked to check their spam folder.
- Reach out to your student's school to share your email address. This is for parents/caregivers that have not used ParentVUE to date and do not have an email on file with our school district. The best indicator of this is if a parent/caregiver does not receive a security-protected email invite from ParentVUE on Aug. 3.

For additional assistance, please reach out to your school or help@district279.org.

ParentVUE holds a variety of student information, including grades and transportation assignments. Students use a similar application called StudentVUE.

CODE OF CONDUCT & TRANSPORTATION

STUDENT RIDERSHIP GUIDELINES

1. Take a seat promptly - move to window seat when possible.
2. Remain seated while on the bus.
3. Keep aisles clear of legs, instruments and/or other objects.
4. Talk quietly so that you do not bother others or distract the bus driver.
5. Do not tamper with safety or bus equipment.
6. Students are required to sit in their assigned seat.
7. Follow instructions of the driver.

Pupils are not allowed to make irregular changes in pickup or delivery stops such as to go home on the bus with a friend or for work, club, party, or social events. Questions regarding this policy should be directed to the Transportation Department at (763) 391-7044 in advance. **School building officials cannot give permission to change buses.**

Parents or guardians are responsible for reinforcing safe bus riding behavior with their children. Students may be videotaped on buses to maximize safety.



"The bus driver is the first teacher of the day."

SAFE

Seat to seat, back to back and feet on the floor.

Keep aisle clear.

Keep objects and body parts in the bus.

Keep hands, feet and objects in your own space.

RESPECTFUL

Treat people and property with kindness.

Conversations and electronics are quiet.

Follow adult directions.

RESPONSIBLE

Take a seat quickly.

Keep food and drinks in your backpack the entire ride.

Be on time (5 minutes before pickup).

Electronics are only used for school work, music or gaming.

Osseo Area Schools
ISO 279

STUDENT SUPPORT

BROOKLYN MIDDLE SCHOOL SUPPORT SERVICES

Brooklyn Middle provides several support services to work collaboratively with classroom teachers to help students academically perform to the best of their ability. Support services work with students and parents to address personal, social, and academic issues that create barriers to a child's education. The following are members of our support staff for the 2022-2023 school year:

6th Grade Counselor/Student Management Specialist.....Judy Anderson/Rachel Walton

7th Grade Counselor/Student Management Specialist.....Annessia Xiong/Donnay Green

8th Grade Counselor/Student Management Specialist.....Elizabeth Johnson/Larry Bilbro

Special Education Building Coordinator.....Jennifer Fletcher

School Resource Officer.....Officer Xiong

Community Resources that are available at Brooklyn Middle School to assist you and your family:

Social Worker—Prairie Care.....TBD

Mental Health Therapist—Lee Carlson.....Troy Mathias

Cornerstone.....TBD

Treehouse.....Brian Thomas

You may contact these additional helping professionals by contacting your child's counselor.

The Future is in Our Classrooms

This fall, voters in Osseo Area Schools will be asked to weigh in on two school funding questions that would maintain services and address growing needs. This is the first time in nearly a decade that voters are being asked to reinvest in district schools.

•**Question 1:** Continue day-to-day learning operations and enhance individualized learning, academic Interventions, student mental health needs and other critical classroom supports.

•**Question 2:** Continue classroom learning technology, as well as needed technology support staff and infrastructure. Additionally prioritize school safety and security and digital learning spaces.

To learn more go to <https://www.district279.org/betterfuture>



VOTE EARLY OR ON NOV. 8, 2022

**FIRST DAY OF SCHOOL:
Tuesday, September 6, 2022**



DOORS OPEN: 7:50am

SCHOOL STARTS: 8:10am

BRING: School Supplies, Lunch Account Check
***Final schedules will be distributed in advisory.**



Brooklyn Middle STEAM School 7377 Noble Avenue N, Brooklyn Park, MN 55443

Principal Kim Monette

Main School Number 763-569-7700

School Hours 8:10am-2:40pm

Assistant Principal Megan Havelak

Attendance Line 763-569-7616

Main Office Hours 7:00am-3:30pm